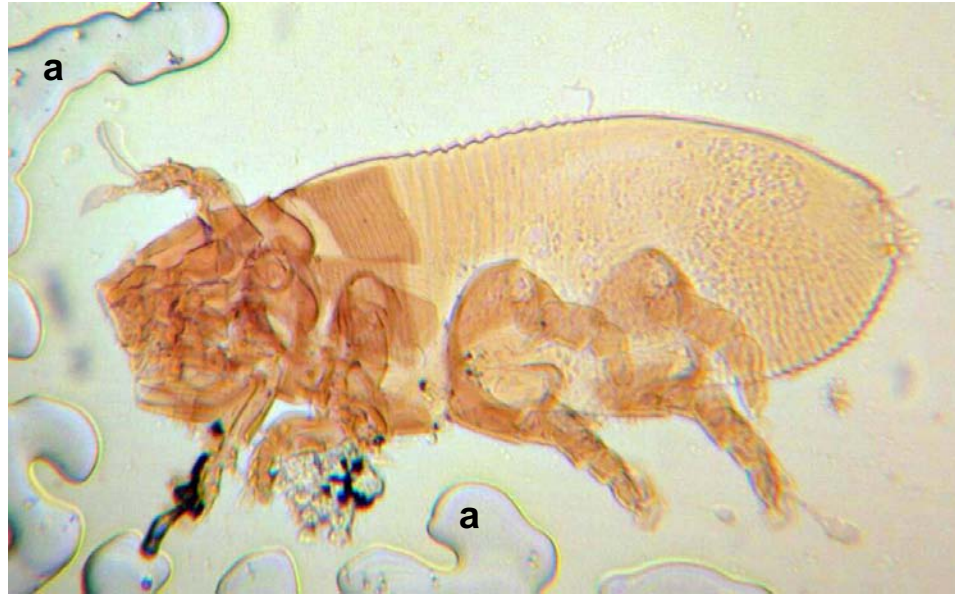


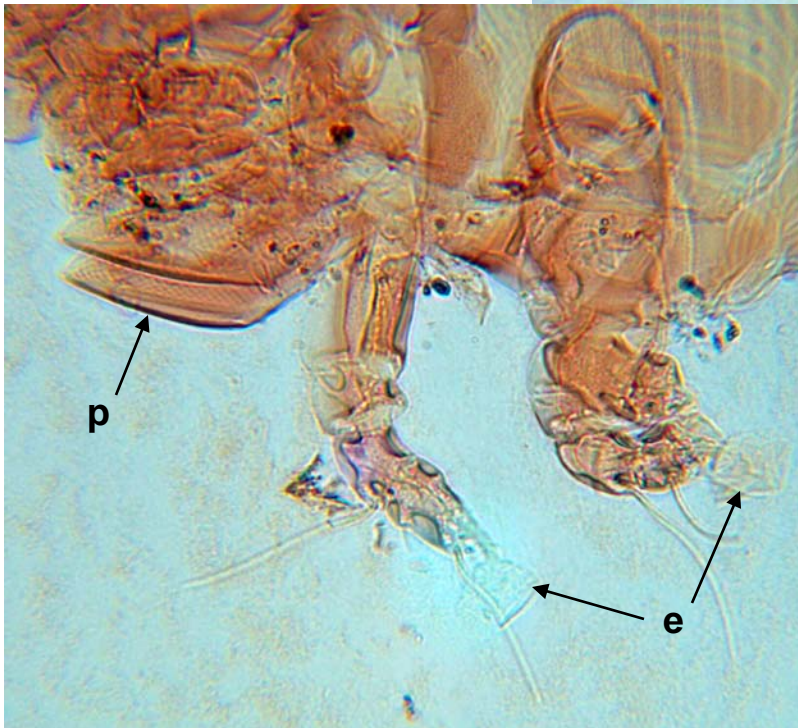
Listrophorus sp. Note: specimens in Hoyer's many years accounts for mounting medium artifacts (a).

female



male

L. americanus,
female.



Note strongly striated, laterally flattened body characteristic of this genus. Palps modified for grasping hairs of host; legs terminating in sucker-like empodium.
Legend: a, antenna; e, empodium; p, palp.

Listrophorus

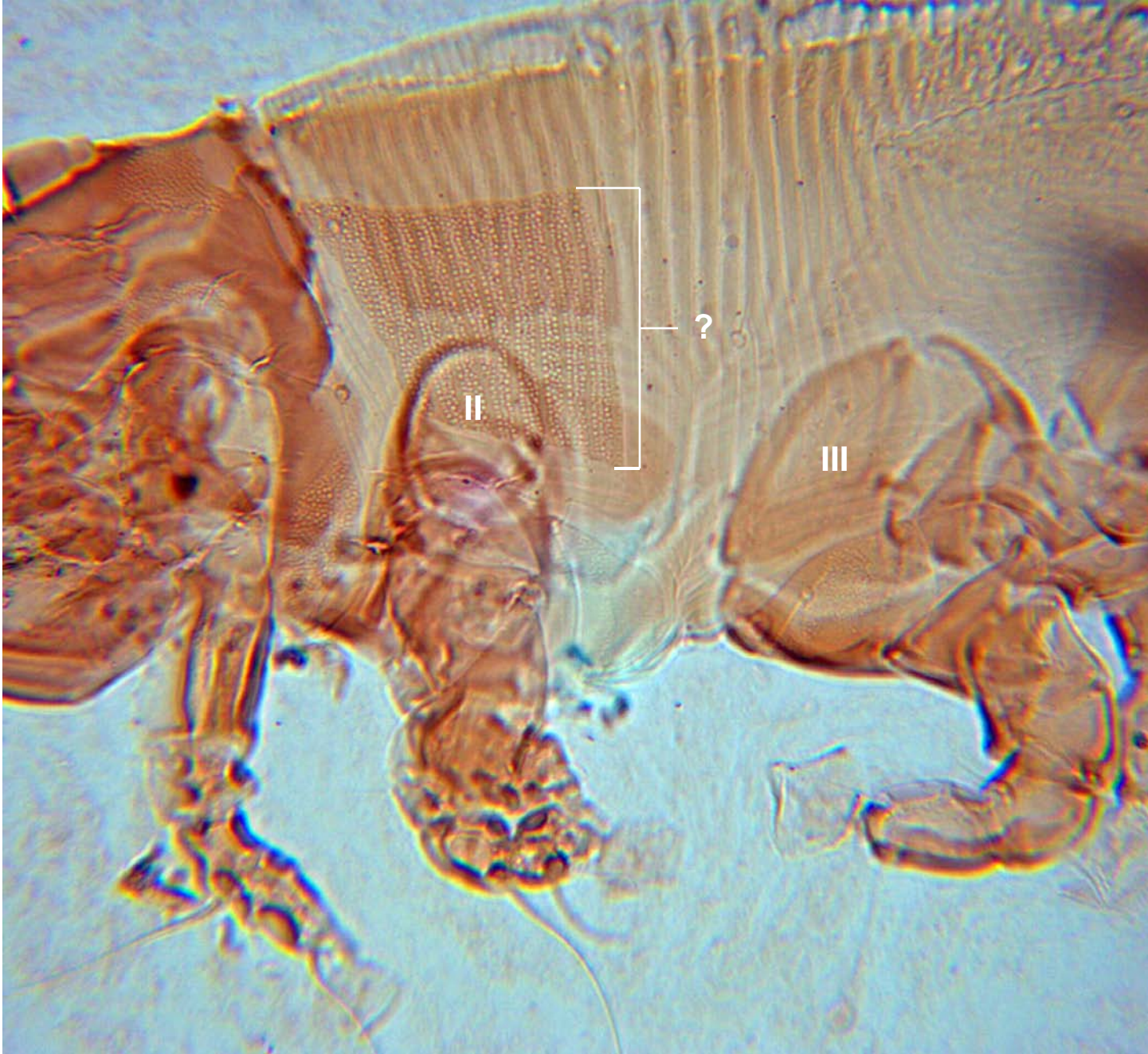
americana.

Structure?

Legend:

II, coxa 2;

III, coxa 3.



Listrophorus sp., nymph? Head region enlarged (below).



Legend: I, coxa 1; II, coxa 2; p, palp; ?, structure seen in previous slide not developed here?



Listrophorus sp. (note legs not near posterior margin of body as in *L. americanus*). Legend: a.....a, mounting medium artifact.



Figure from Krantz, G. W. 1971. A Manual of Acarology, Oregon State University Book Stores, Inc. Corvallis, Oregon, 335pp.

